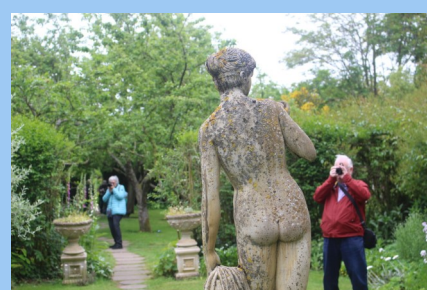
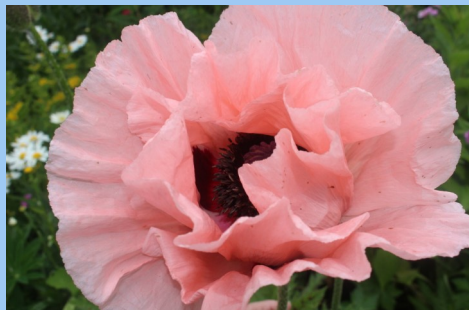
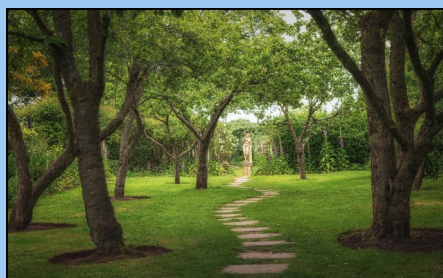


PHOTOGRAPHIC GROUP – VISIT TO CROOK HALL

In June the photographic Group tested their skills in a visit to Crook Hall in Durham – now owned by the National Trust. This month we shared our photographs.



Our New Committee

Chair	Diana Clark
Secretary	Sandra Cullen
Treasurer	Keith Allison
Vice Chair & Membership Secretary	Jim Redden
Groups' Co-ordinator	Anne Moffatt
Newsletter & Website Editor	Linda Carr
Welfare Secretary, Monthly Greeter	Jeni Anderson
Speaker Secretary	David James Taylor
Assistant Treasurer	Elvira Pirozzi
Minutes Secretary	Susan Steanson

Luncheon club

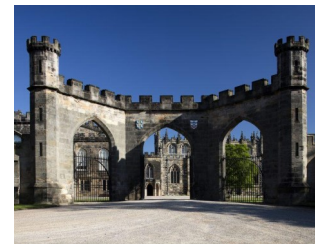
25 members met at the Waggon Eighton banks on Friday 30th of June for an afternoon of food drink and good conversation. For July's meeting I have provisionally booked Mamas bar grill pizzeria at Newbottle Friday 28th July at 12.30. I will be taking names and a non returnable £5 deposit per person at the to-day's meeting. **Anne**

We have started our summer sessions of **croquet**. Thanks to Ann Thomley for organising it and supervising our motley crew. It was a very good turnout last month and a good time was had by all. **Diana**



Auckland Castle and Gardens

We are planning a visit here on Wednesday September 6th .



The cost of the visit is £26. This includes bus from St Andrew's and entrance to Castle and gardens. Please let me have your name if you want to go on this visit. I will take a deposit of £5 today and the remainder at the August meeting. **Sandra**

U3a diaries.

Diaries are now available to order at a cost of £ 4.10 to include postage.



I will be taking orders at the July and August monthly meetings. **Sandra**

Quiz Answers

1. Sherlock. 2. Jane Austen. 3. Asia. 4. Jeremy Hunt. 5. South America. 6. Albert Einstein. 7. The Bill. 8. River Thames. 9. Harper Lee. 10. Jupiter.

Strollers

On 27th June, 17 Strollers went on a guided walk, led by volunteers, in the East End of Sunderland from the 1719 church. It was fascinating. The parish church of Holy Trinity was opened in 1719 to cater for the thriving population of the area, so they wouldn't have to continue walking up hill to Bishopwearmouth Church. It was built in the classical style, with bricks rather than stone. First we learnt about the history of the church, which was also used to house the council chamber and had a porch big enough to accommodate the fire engine.



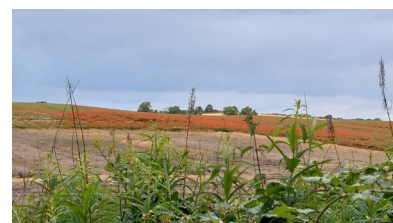
We strolled around the surrounding area, viewing the Masonic Hall, then to High Street East to see the Exchange Building and the Eagle Building (which was originally a pub), down Low Street to the river, seeing the Bonded Warehouse on the way and then to the site of the Ferry Landing. The ferry operated from the 7th century, long before there were any bridges across the river, until 1957, being mentioned in The Shipyard Girls books. The fare from the 18 century to its closure was one halfpenny (0.2 pence). Next to this was the Bodlewell, where water could be bought for half a farthing.

Then we went back across High Street East to Church Street where the oldest houses in the area are still standing, dating from 1710. Once they were the homes of wealthy merchants, but now are owned by the Hell's Angels and a Chinese takeaway. In Georgian times the East End had been prosperous, but the rich had moved out of the area and it had become overcrowded. The first case of cholera was recorded here. By 1988 the church could no longer sustain a congregation and now it is a centre for local history, creativity and community. So the area has become more vibrant again, with student accommodation or entertainment venues in some of the old buildings and a commitment to preserve its history and culture. **Diana**



Tuesday 4th July – Strollers met at St Andrews and car shared to Shincliffe garden centre from where we walked through the woods along the river bank enjoying the scenery. We stopped for photos and then made our way back through the woods to the garden centre. There we had tea and scones, (some of us cream cakes!) in the outside tea room area. The refreshments went down very well as did the chat. We returned to St Andrews so ending a delightful afternoon stroll. **Brian**

Monthly Walk – After all cars had found the meeting place which the satnavs didn't seem to know existed, we had a slightly late start on a pleasant walk along the railway path from Pitington to Hetton. This was followed by an enjoyable stay in the Little Peppercorn Tea-rooms where we had a very good lunch. **Linda**



Now that's long distance walking!!

Congratulations to John Ball on completing his long Hadrian's Wall walk with his son. He said it included 'an 18 mile slog, up and up for nine hours'. Well done John.



QUIZ

1. Which critically acclaimed TV series follows the life of a high-functioning sociopath and his loyal friend?
2. Who wrote the novel "Pride and Prejudice"?
3. What is the largest continent in the world?
4. Who is the current Chancellor?
5. Which continent is home to the Amazon rainforest?
- 6 Which famous scientist developed the theory of relativity?
7. Which police drama series is set in the fictional town of Sun Hill and aired for 26 years?
8. Which river runs through the city of Oxford?
9. Who wrote the novel "To Kill a Mockingbird"?
10. What is the largest planet in our solar system?

CURRENT ACTIVITIES

Coffee Morning <i>Dobbies</i>	Wednesday 10:30 a.m. 1st in month	Craft <i>Millennium Centre</i>	Wednesday 1 p.m. 3rd in month <i>Jeni Anderson</i>
Day Outings	As and when	Dominoes <i>Woodridge Gdns</i>	Monday 2 p.m. Alternate weeks September to June <i>Pat Gaunlett</i>
Holiday Group <i>Woodridge Gdns</i>	Thursday 10.30 a.m. Some month's only, last in month	Lunch	Friday last in month (variable time and place) <i>Anne Anderson</i>
Monthly Meeting <i>St.Andrews</i>	Tuesday 10 a.m. 2nd in month	Photography <i>Millennium Centre</i>	Thursday 10 a.m. 1st in Month
Quiz Group <i>Millennium Centre</i>	Thursday 2 p.m. 2nd in month <i>Shirley Talbot</i>	Strollers <i>Meet St Andrews</i>	Tuesday Usually 1 p.m. can vary <i>Diana Clark</i>
Walking <i>Meet St Andrews</i>	Wednesday 10 a.m. last in month <i>John Ball</i>	Whist <i>Woodridge Gdns</i>	Monday 2 p.m. Alternate weeks September to June <i>George Rutter</i>

CONTACTS : Chair, Diana Clark Secretary: Sandra Cullen

Welfare Secretary: Jeni Anderson